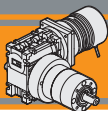


Indice	Index	Pag. Page
Caratteristiche tecniche	<i>Technical features</i>	G2
Designazione	<i>Classification</i>	G2
Versioni	<i>Versions</i>	G2
Simbologia	<i>Symbols</i>	G2
Lubrificazione e temperatura	<i>Lubrication and temperature</i>	G2
Carichi radiali	<i>Radial loads</i>	G3
Rapporti	<i>Ratios</i>	G3
Rendimento	<i>Efficiency</i>	G3
WMP026/521 con motore brushless BLS 022.240	<i>WMP026/521 with brushless motor BLS 022.240</i>	G4
WMP026/522 con motore brushless BLS 022.240	<i>WMP026/522 with brushless motor BLS 022.240</i>	G5
WMP026/621 con motore brushless BLS 022.240	<i>WMP026/621 with brushless motor BLS 022.240</i>	G6
WMP026/622 con motore brushless BLS 022.240	<i>WMP026/622 with brushless motor BLS 022.240</i>	G7
WMP030/811 con motore brushless BLS 043.240	<i>WMP030/811 with brushless motor BLS 043.240</i>	G8
WMP030/811 con motore brushless BL 070.240	<i>WMP030/811 with brushless motor BL 070.240</i>	G9
WMP030/811 con motore brushless BL 070.480	<i>WMP030/811 with brushless motor BL 070.480</i>	G9
WMP030/812 con motore brushless BLS 043.240	<i>WMP030/812 with brushless motor BLS 043.240</i>	G10
WMP030/812 con motore brushless BL 070.240	<i>WMP030/812 with brushless motor BL 070.240</i>	G11
WMP030/812 con motore brushless BL 070.480	<i>WMP030/812 with brushless motor BL 070.480</i>	G11

Questa sezione annulla e sostituisce ogni precedente edizione o revisione. Qualora questa sezione non Vi sia giunta in distribuzione controllata, l'aggiornamento dei dati ivi contenuto non è assicurato. **In tal caso la versione più aggiornata è disponibile sul nostro sito internet www.intecno-srl.com**

This section replaces any previous edition and revision. If you obtained this catalogue other than through controlled distribution channels, the most up to date content is not guaranteed. In this case the latest version is available on our web site www.intecno-srl.com



Motoriduttori brushless CC combinati

Brushless DC double reduction gearmotors

Caratteristiche tecniche

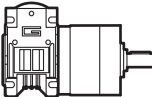

Technical features

L'accoppiamento di un riduttore a vite senza fine con un riduttore epicicloidale consente di ottenere elevati rapporti di riduzione ($i_{max} = 1/18452$) e di disporre di un gruppo autolubrificato compatto, silenzioso e con un'elevata affidabilità.

The coupling of a wormgearbox to a planetary gearbox allows to obtain high reduction ratios ($i_{max} = 1/18452$) and to get a compact, silent, self lubricated with high reliability group.

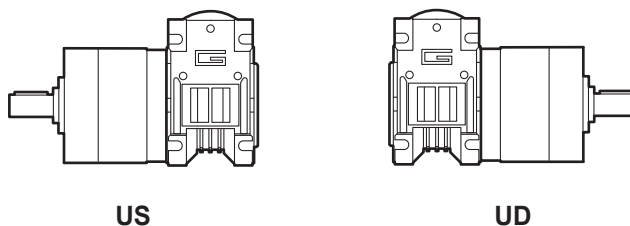
Designazione

Classification

RIDUTTORE / GEARBOX					MOTORE / MOTOR		
WMP	026/52	2	US	405	BL070.480	48V	BR
Tipo Type	Grandezza Size	Numero stadi epicicloidale Planetary stages number	Versione Riduttore Gearbox Version	Rapporto in Ratio in	Tipo Type	Tensione Voltage	Freno Brake
WMP 	026/52 026/62 030/81	1 2 3	US UD	Vedere tabelle See tables	BLS022.240 BLS043.240 BL070.240 BL070.48B BL070.480	24V-36V 24V-36V 24V 48V 48V	24V 48V 

Versioni

Versions



Simbologia

Symbols

n_1	[min ⁻¹]	Velocità in ingresso / <i>Input speed</i>
n_2	[min ⁻¹]	Velocità in uscita / <i>Output speed</i>
i		Rapporto di riduzione / <i>Ratio</i>
P_1	[kW]	Potenza in entrata / <i>Input power</i>
M_n	[Nm]	Coppia nominale in uscita del riduttore / <i>Maximum output torque of the gearbox</i>
M_2	[Nm]	Coppia in uscita in funzione di P_1 / <i>Output torque referred to P_1</i>
sf		Fattore di servizio / <i>Service factor</i>
R_d	%	Rendimento dinamico / <i>Dynamic efficiency</i>
A_2	[N]	Carico assiale ammissibile in uscita / <i>Permitted output axial load</i>
R_2	[N]	Carico radiale ammissibile in uscita / <i>Permitted output radial load</i>

Lubrificazione

Lubrication

I riduttori a vite senza fine della serie CM sono lubrificati a vita con olio sintetico di viscosità 320 e possono essere installati in qualunque posizione di montaggio.

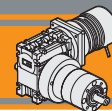
Permanent synthetic oil long-life lubrication allow to use CM wormgearbox range in all mounting position.

I riduttori epicicloidali sono lubrificati in modo permanente, non richiedono quindi ulteriore manutenzione. Questo gli consente di essere installati praticamente ovunque.

Planetary gearboxes are life-time lubricated with grease, therefore they are maintenance free. They can be installed in any location.

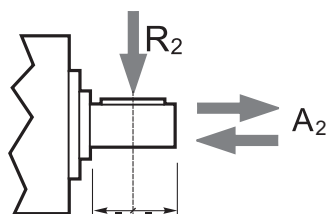
Temperatura ambiente 0 ÷ 40 °C (in assenza di congelamento ed in assenza di condensa).
Per temperature diverse, contattare nostro UT.

Ambient temperature 0 ÷ 40 °C (in the absence of freezing and condensation).
For temperature outside this range please contact our technical dept.



Carichi radiali

Radial loads



Numero di stadi Stages number	Carichi Radiali R ₂ [N] Radial Load R ₂ [N]		
	P52	P62	P81
1	200	240	400
2	320	360	600
3	450	520	1000

Numero di stadi Stages number	Carichi Assiali A ₂ [N] Axial Load A ₂ [N]		
	P52	P62	P81
1	60	70	80
2	100	100	120
3	150	150	200

Rapporti

Ratios

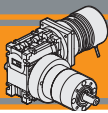
Motoriduttore Gearmotor	Numero stadi epicicloidale Planetary stages number	Rapporto epicicloidale Planetary ratio	Rapporto vite senza fine Wormgearbox ratio	Rapporto finale Total ratio
.../026/052 .../026/062 .../030/081	1	6.75	10	67.5
			15	101.3
			20	135
			30	202.5
			40	270
			50	337.5
	2	28.93	10	289.3
			15	434.0
			20	578.6
			30	867.9
			40	1157
			50	1447
			60	1736
			60	2098
	34.97	60	2098	
	45.56	60	2734	

Rendimento

Efficiency

Motoriduttore Gearmotor	n ₁ [min ⁻¹]	Rendimento Efficiency	Rapporto / Ratio															
			67.5	101.3	135	202.5	270	337.5	405	289.3	434.0	578.6	867.9	1157	1447	1736	2098	2734
.../026/052	2800	Rd %	68	66	64	58	54	51	48	64	62	60	54	51	48	45	45	45
.../026/062			68	66	64	58	54	51	48	64	62	60	54	51	48	45	45	45
.../030/081			68	67	64	59	56	52	49	64	63	60	55	52	48	46	46	46

Rendimento teorico del riduttore dopo il rodaggio
Theoretical efficiency of the gearbox after the first running period



Motoriduttori brushless CC combinati Brushless DC double reduction gearmotors

WMP026/521 con motore brushless CC

WMP026/521 with brushless DC motor

WMP 026/521	BLS022.240													
	24V						36V							
	n ₂ MIN		n ₂ MAX		n ₁ MAX [rpm]	n ₂ MIN		n ₂ MAX		n ₁ MAX [rpm]				
M ₂	sf	M ₂	sf	M ₂		sf	M ₂	sf						
67.5	4.4	8.8	2.0	44.4	10	1.8	3000	5.9	9.2	2.0	59.3	10	1.8	4000
101.3	3.0	12	1.5	29.6	15	1.2		4.0	12	1.4	39.5	15	1.2	
135.0	2.2	15	1.2	22.2	18	1.0*		3.0	16	1.1	29.6	18	1.0*	
202.5	1.5	18	1.0*	14.8	18	1.0*		2.0	18	1.0*	19.8	18	1.0*	
270.0	1.1	18	1.0*	11.1	18	1.0*		1.5	18	1.0*	14.8	18	1.0*	
337.5	0.9	18	1.0*	8.9	18	1.0*		1.2	18	1.0*	11.9	18	1.0*	
405.0	0.7	18	1.0*	7.4	18	1.0*		1.0	18	1.0*	9.9	18	1.0*	

Nota: I valori * indicano il superamento della coppia massima sopportata dal riduttore per il servizio in S1.

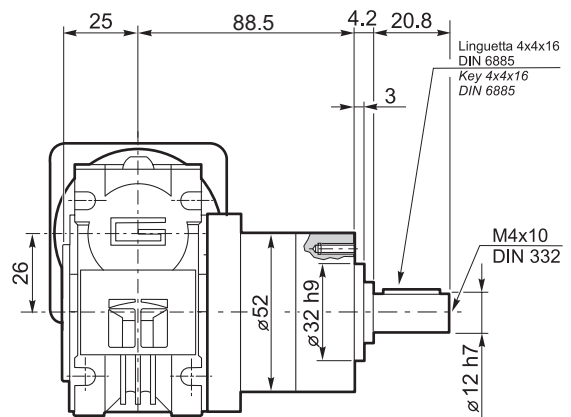
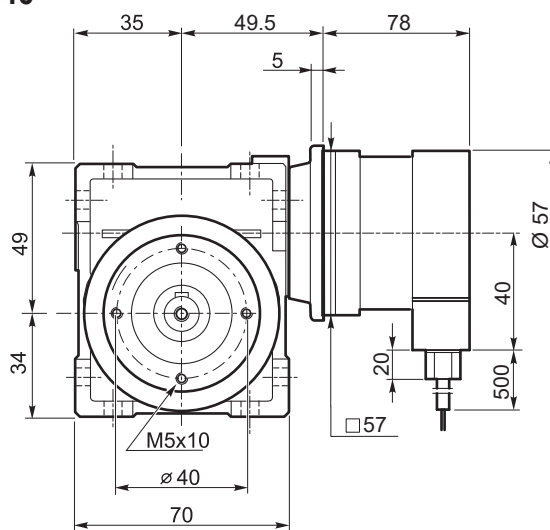
N.B.: value * indicate that maximum torque withstood by gear reducer for service in S1 is exceeded.

Tipo Type	Numero di poli Number of poles	Numero di fasi Number of phase	Tensione Rated voltage [V]	Numero di giri Rated speed [rpm]	Coppia nominale Rated torque [Nm]	Potenza nominale Rated power [W]
BLS022.240	4	3	36	4000	0.22	92
			24	3000		70
Tipo Type	Coppia massima Peak torque [Nm]	Corrente nominale Rated current [A]	Resistenza Resistance [ohm]	Induttanza Inductance [mH]	Corrente massima Peak current [A]	Peso Weight [kg]
BLS022.240	0.44	3.7	0.64	3.1	7.4	0.72

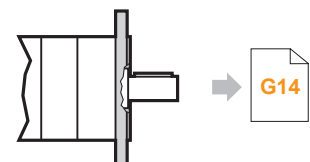
Azionamenti
Drives



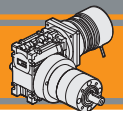
WMP026/521..U
+
BLS022.240



Kg
2.3



WMP026/521...C



WMP026/522 con motore brushless CC

WMP026/522 with brushless DC motor

WMP 026/522	BLS022.240											
	24V						36V					
	n ₂ MIN		n ₂ MAX		n ₁ MAX [rpm]	n ₂ MIN		n ₂ MAX		n ₁ MAX [rpm]		
M ₂	sf	M ₂	sf	M ₂		sf	M ₂	sf				
289.3	1.0	25	1.0*	10.4	25	1.0*	1.4	25	1.0*	13.8	25	1.0*
434.0	0.7	25	1.0*	6.9	25	1.0*	0.9	25	1.0*	9.2	25	1.0*
578.6	0.5	25	1.0*	5.2	25	1.0*	0.7	25	1.0*	6.9	25	1.0*
867.9	0.3	25	1.0*	3.5	25	1.0*	0.5	25	1.0*	4.6	25	1.0*
1157	0.3	25	1.0*	2.6	25	1.0*	0.3	25	1.0*	3.5	25	1.0*
1447	0.2	25	1.0*	2.1	25	1.0*	0.3	25	1.0*	2.8	25	1.0*
1736	0.2	25	1.0*	1.7	25	1.0*	0.2	25	1.0*	2.3	25	1.0*
2098	0.1	25	1.0*	1.4	25	1.0*	0.2	25	1.0*	1.9	25	1.0*
2734	0.1	25	1.0*	1.1	25	1.0*	0.1	25	1.0*	1.5	25	1.0*

Nota: I valori * indicano il superamento della coppia massima sopportata dal riduttore per il servizio in S1.

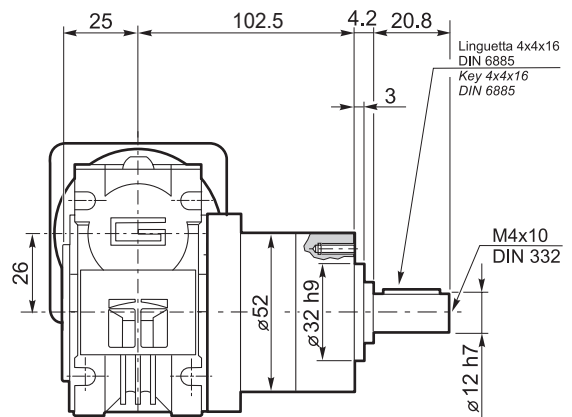
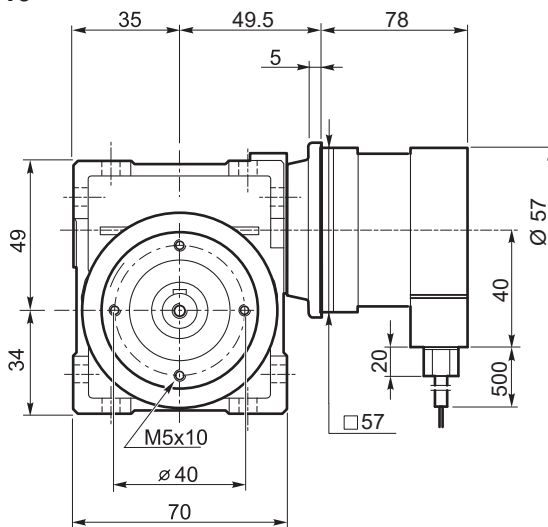
N.B.: value * indicate that maximum torque withstood by gear reducer for service in S1 is exceeded.

Tipo Type	Numero di poli Number of poles	Numero di fasi Number of phase	Tensione Rated voltage [V]	Numero di giri Rated speed [rpm]	Coppia nominale Rated torque [Nm]	Potenza nominale Rated power [W]
BLS022.240	4	3	36	4000	0.22	92
			24	3000		70
Tipo Type	Coppia massima Peak torque [Nm]	Corrente nominale Rated current [A]	Resistenza Resistance [ohm]	Induttanza Inductance [mH]	Corrente massima Peak current [A]	Peso Weight [kg]
BLS022.240	0.44	3.7	0.64	3.1	7.4	0.72

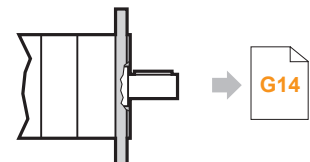
Azionamenti
Drives



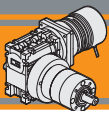
WMP026/522..U
+
BLS022.240



2.5



WMP026/522...C



Motoriduttori brushless CC combinati Brushless DC double reduction gearmotors

WMP026/621 con motore brushless CC

WMP026/621 with brushless DC motor

WMP 026/621	BLS022.240													
	24V						36V							
	n ₂ MIN		n ₂ MAX		n ₁ MAX [rpm]	n ₂ MIN		n ₂ MAX		n ₁ MAX [rpm]				
M ₂	sf	M ₂	sf	M ₂		sf	M ₂	sf						
ir														
67.5	4.4	9	4.0	59.3	10	3.4	3000	5.9	9	3.8	59.3	10	3.4	4000
101.3	3.0	12	2.9	39.5	15	2.3		4.0	12	2.8	39.5	15	2.3	
135.0	2.2	15	2.3	29.6	19	1.8		3.0	16	2.2	29.6	19	1.8	
202.5	1.5	19	1.9	19.8	27	1.3		2.0	20	1.7	19.8	27	1.3	
270.0	1.1	23	1.5	14.8	33	1.0		1.5	25	1.4	14.8	33	1.0	
337.5	0.9	25	1.4	11.9	35	1.0*		1.2	28	1.2	11.9	35	1.0*	
405.0	0.7	28	1.2	9.9	35	1.0*		1.0	31	1.1	9.9	35	1.0*	

Nota: I valori * indicano il superamento della coppia massima sopportata dal riduttore per il servizio in S1.

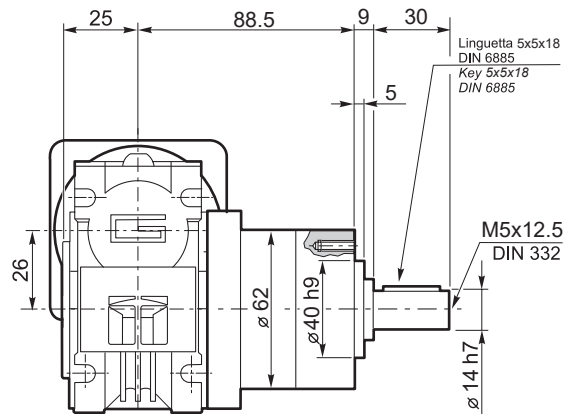
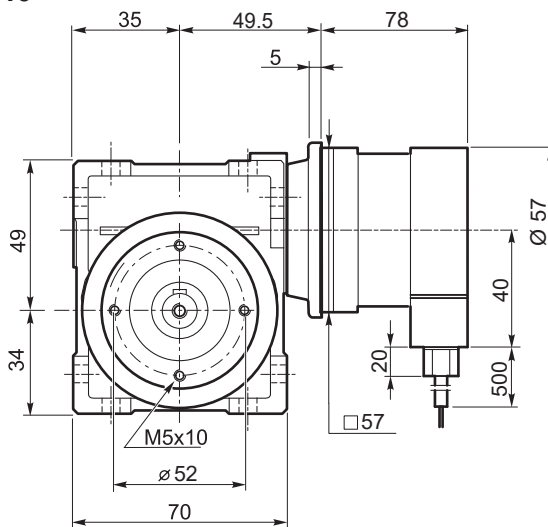
N.B.: value * indicate that maximum torque withstood by gear reducer for service in S1 is exceeded.

Tipo Type	Numero di poli Number of poles	Numero di fasi Number of phase	Tensione Rated voltage [V]	Numero di giri Rated speed [rpm]	Coppia nominale Rated torque [Nm]	Potenza nominale Rated power [W]
BLS022.240	4	3	36	4000	0.22	92
			24	3000		70
Tipo Type	Coppia massima Peak torque [Nm]	Corrente nominale Rated current [A]	Resistenza Resistance [ohm]	Induttanza Inductance [mH]	Corrente massima Peak current [A]	Peso Weight [kg]
BLS022.240	0.44	3.7	0.64	3.1	7.4	0.72

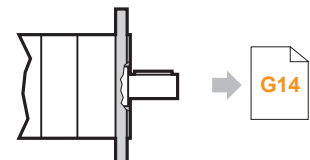
Azionamenti
Drives



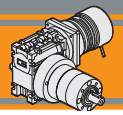
WMP026/621..U
+
BLS022.240



Kg
2.4



WMP026/621...C



WMP026/622 con motore brushless CC

WMP026/622 with brushless DC motor

WMP 026/622	BLS022.240											
	24V						36V					
	n ₂ MIN		n ₂ MAX		n ₁ MAX [rpm]	n ₂ MIN		n ₂ MAX		n ₁ MAX [rpm]		
M ₂	sf	M ₂	sf	M ₂		sf	M ₂	sf				
289.3	1.0	35	1.4	10.4	41	1.2	1.4	37	1.4	13.8	41	1.2
434.0	0.7	48	1.0	6.9	50	1.0*	0.9	50	1.0	9.2	50	1.0*
578.6	0.5	50	1.0*	5.2	50	1.0*	0.7	50	1.0*	6.9	50	1.0*
867.9	0.3	50	1.0*	3.5	50	1.0*	0.5	50	1.0*	4.6	50	1.0*
1157	0.3	50	1.0*	2.6	50	1.0*	0.3	50	1.0*	3.5	50	1.0*
1447	0.2	50	1.0*	2.1	50	1.0*	0.3	50	1.0*	2.8	50	1.0*
1736	0.2	50	1.0*	1.7	50	1.0*	0.2	50	1.0*	2.3	50	1.0*
2098	0.1	50	1.0*	1.4	50	1.0*	0.2	50	1.0*	1.9	50	1.0*
2734	0.1	50	1.0*	1.1	50	1.0*	0.1	50	1.0*	1.5	50	1.0*

Nota: I valori * indicano il superamento della coppia massima sopportata dal riduttore per il servizio in S1.

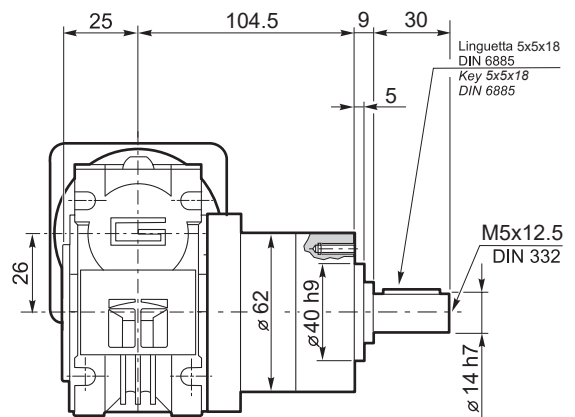
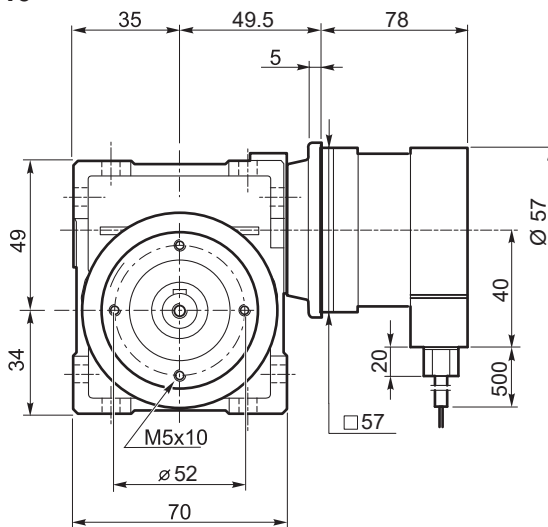
N.B.: value * indicate that maximum torque withstood by gear reducer for service in S1 is exceeded.

Tipo Type	Numero di poli Number of poles	Numero di fasi Number of phase	Tensione Rated voltage [V]	Numero di giri Rated speed [rpm]	Coppia nominale Rated torque [Nm]	Potenza nominale Rated power [W]
BLS022.240	4	3	36	4000	0.22	92
			24	3000		70
Tipo Type	Coppia massima Peak torque [Nm]	Corrente nominale Rated current [A]	Resistenza Resistance [ohm]	Induttanza Inductance [mH]	Corrente massima Peak current [A]	Peso Weight [kg]
BLS022.240	0.44	3.7	0.64	3.1	7.4	0.72

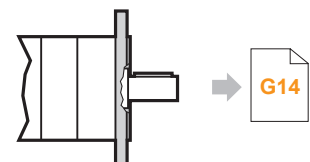
Azionamenti
Drives



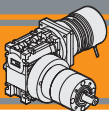
WMP026/622..U
+
BLS022.240



Kg
2.8



WMP026/622...C



Motoriduttori brushless CC combinati Brushless DC double reduction gearmotors

WMP030/811 con motore brushless CC

WMP030/811 with brushless DC motor

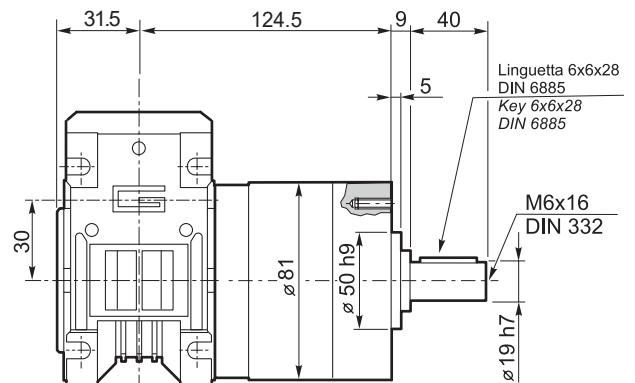
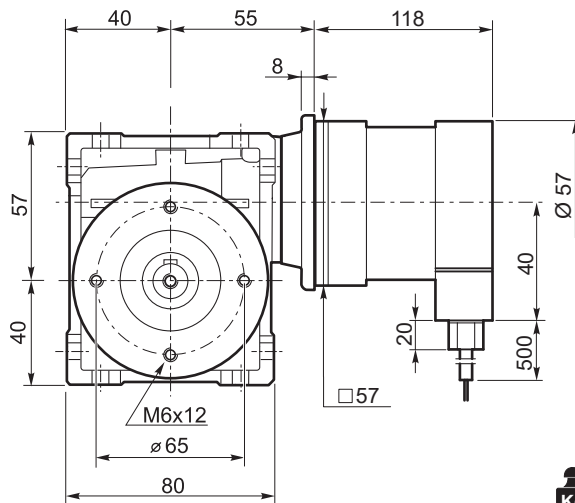
WMP 030/811	BLS043.240													
	24V						36V							
	n ₂ MIN		n ₂ MAX		n ₁ MAX [rpm]	n ₂ MIN		n ₂ MAX		n ₁ MAX [rpm]				
M ₂	sf	M ₂	sf	M ₂		sf	M ₂	sf						
67.5	4.4	17	4.6	44.4	20	4.0	4.4	17	4.6	44.4	20	4.0	3000	4000
101.3	3.0	24	3.4	29.6	29	2.7	3.0	24	3.4	29.6	29	2.7		
135.0	2.2	30	2.7	22.2	38	2.1	2.2	30	2.7	22.2	38	2.1		
202.5	1.5	35	2.3	14.8	45	1.8	1.5	35	2.3	14.8	45	1.8		
270.0	1.1	45	1.8	11.1	51	1.6	1.1	45	1.8	11.1	51	1.6		
337.5	0.9	52	1.5	8.9	65	1.2	0.9	52	1.5	8.9	65	1.2		
405.0	0.7	59	1.3	7.4	76	1.1	0.7	59	1.3	7.4	76	1.1		

Tipo Type	Numero di poli Number of poles	Numero di fasi Number of phase	Tensione Rated voltage [V]	Numero di giri Rated speed [rpm]	Coppia nominale Rated torque [Nm]	Potenza nominale Rated power [W]
BLS043.240	4	3	36	4000	0.43	180
	4	3	24	3000	0.43	130
Tipo Type	Coppia massima Peak torque [Nm]	Corrente nominale Rated current [A]	Resistenza Resistance [ohm]	Induttanza Inductance [mH]	Corrente massima Peak current [A]	Peso Weight [kg]
BLS043.240	0.86	6	0.35	1.0	12.0	1.25

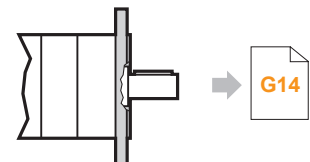
Azionamenti
Drives



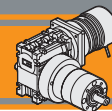
WMP030/811..U
+
BLS043.240



Kg
4.4



WMP030/811...C



WMP030/811 con motore brushless CC

WMP030/811 with brushless DC motor

WMP 030/811	BL070.240 / BL070.480 / BL070.48B						
	24V / 48V						
ir	n ₂ MIN			n ₂ MAX			n ₁ MAX [rpm]
		M ₂	sf		M ₂	sf	
67.5	4.4	29	2.8	44.4	32	2.5	3000
101.3	3.0	39	2.1	29.6	47	1.7	
135.0	2.2	49	1.6	22.2	59	1.3	
202.5	1.5	59	1.3	14.8	76	1.1	
270.0	1.1	65	1.2	11.1	80	1.0*	
337.5	0.9	76	1.1	8.9	80	1.0*	
405.0	0.7	80	1.0*	7.4	80	1.0*	

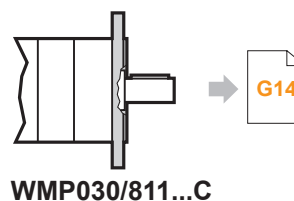
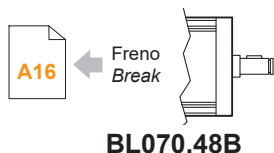
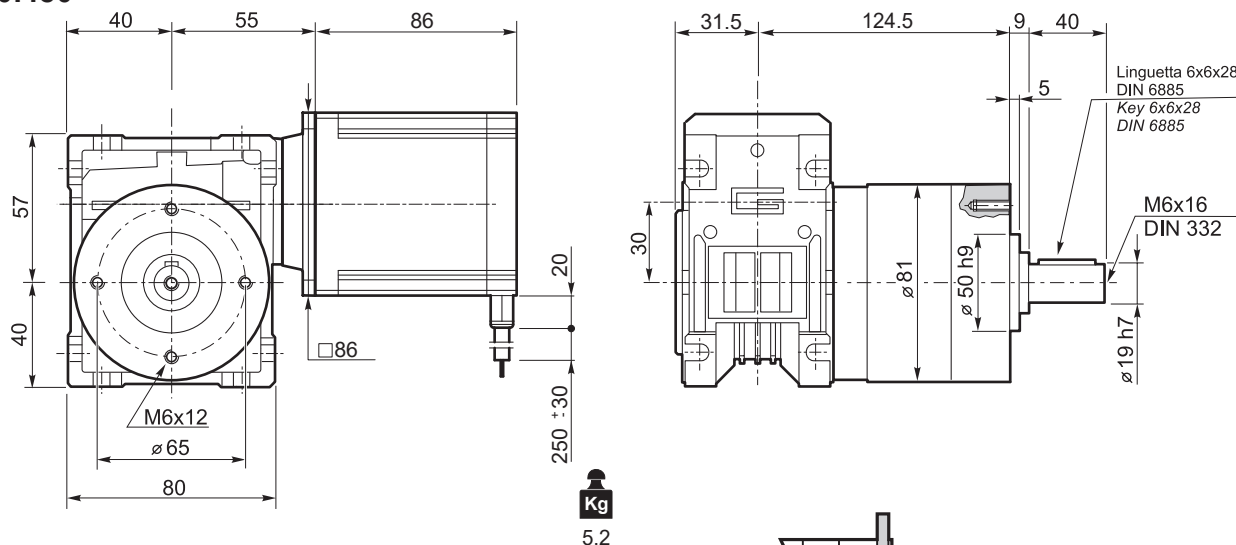
Nota: I valori * indicano il superamento della coppia massima sopportata dal riduttore per il servizio in S1.

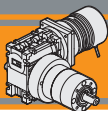
*N.B.: value * indicate that maximum torque withstood by gear reducer for service in S1 is exceeded.*

Tipo Type	Numero di poli Number of poles	Numero di fasi Number of phase	Tensione Rated voltage [V]	Numero di giri Rated speed [rpm]	Coppia nominale Rated torque [Nm]	Potenza nominale Rated power [W]
BL070.240	8	3	24	3000	0.7	220
BL070.480 BL070.48B	8	3	48	3000	0.7	220
Tipo Type	Coppia massima Peak torque [Nm]	Corrente nominale Rated current [A]	Resistenza Resistance [ohm]	Induttanza Inductance [mH]	Corrente massima Peak current [A]	Peso Weight [kg]
BL070.240	2.1	13	0.091	0.23	26	2.1
BL070.480 BL070.48B	1.4	6.5	0.34	1.0	13	2.1



WMP030/811..U
+
BL070.240
BL070.480





Motoriduttori brushless CC combinati Brushless DC double reduction gearmotors

WMP030/812 con motore brushless CC

WMP030/812 with brushless DC motor

WMP 030/812	BLS043.240													
	24V						36V							
	n ₂ MIN			n ₂ MAX			n ₁ MAX [rpm]	n ₂ MIN			n ₂ MAX			n ₁ MAX [rpm]
M ₂	sf		M ₂	sf		M ₂		sf		M ₂	sf			
289.3	1.0	74	1.6	10.4	86	1.4	3000	1.0	74	1.6	10.4	86	1.4	4000
434.0	0.7	102	1.2	6.9	120	1.0*		0.7	102	1.2	6.9	120	1.0*	
578.6	0.5	120	1.0*	5.2	120	1.0*		0.5	120	1.0*	5.2	120	1.0*	
867.9	0.3	120	1.0*	3.5	120	1.0*		0.3	120	1.0*	3.5	120	1.0*	
1157	0.3	120	1.0*	2.6	120	1.0*		0.3	120	1.0*	2.6	120	1.0*	
1447	0.2	120	1.0*	2.1	120	1.0*		0.2	120	1.0*	2.1	120	1.0*	
1736	0.2	120	1.0*	1.7	120	1.0*		0.2	120	1.0*	1.7	120	1.0*	
2098	0.1	120	1.0*	1.4	120	1.0*		0.1	120	1.0*	1.4	120	1.0*	
2734	0.1	120	1.0*	1.1	120	1.0*		0.1	120	1.0*	1.1	120	1.0*	

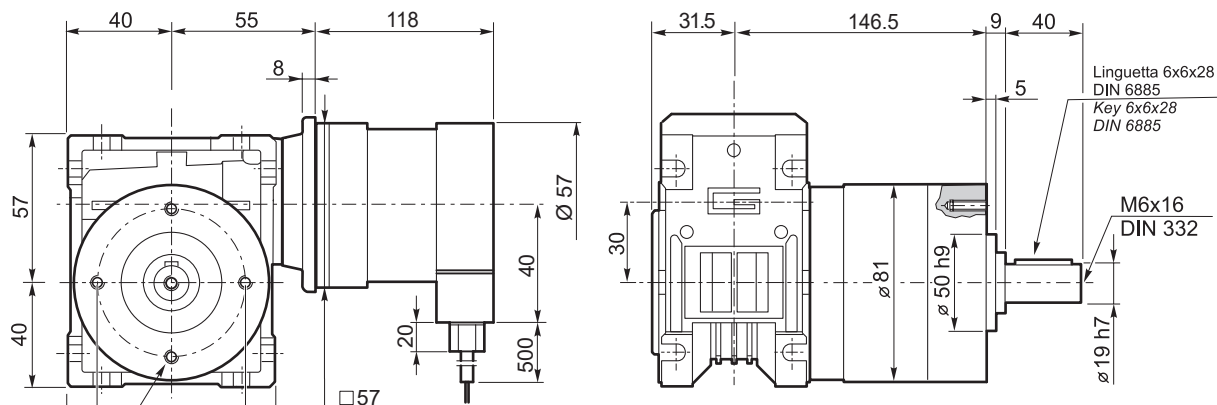
Nota: I valori * indicano il superamento della coppia massima sopportata dal riduttore per il servizio in S1.

N.B.: value * indicate that maximum torque withstood by gear reducer for service in S1 is exceeded.

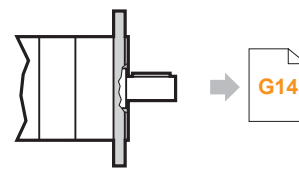
Tipo Type	Numero di poli Number of poles	Numero di fasi Number of phase	Tensione Rated voltage [V]	Numero di giri Rated speed [rpm]	Coppia nominale Rated torque [Nm]	Potenza nominale Rated power [W]
BLS043.240	4	3	36	4000	0.43	180
	4	3	24	3000	0.43	130
Tipo Type	Coppia massima Peak torque [Nm]	Corrente nominale Rated current [A]	Resistenza Resistance [ohm]	Induttanza Inductance [mH]	Corrente massima Peak current [A]	Peso Weight [kg]
BLS043.240	0.86	6	0.35	1.0	12.0	1.25



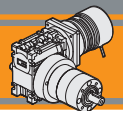
WMP030/812..U
+
BLS043.240



Kg
5.1



WMP030/812...C



WMP030/812 con motore brushless CC

WMP030/812 with brushless DC motor

WMP 030/812	BL070.240 / BL070.480 / BL070.48B						
	24V / 48V						
ir	n ₂ MIN			n ₂ MAX			n ₁ MAX [rpm]
		M ₂	sf		M ₂	sf	
289.3	1.0	120	1.0*	10.4	120	1.0*	3000
434.0	0.7	120	1.0*	6.9	120	1.0*	
578.6	0.5	120	1.0*	5.2	120	1.0*	
867.9	0.3	120	1.0*	3.5	120	1.0*	
1157	0.3	120	1.0*	2.6	120	1.0*	
1447	0.2	120	1.0*	2.1	120	1.0*	
1736	0.2	120	1.0*	1.7	120	1.0*	
2098	0.1	120	1.0*	1.4	120	1.0*	
2734	0.1	120	1.0*	1.1	120	1.0*	

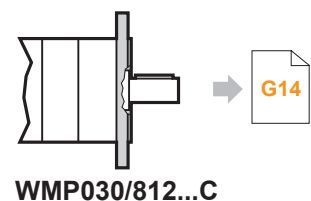
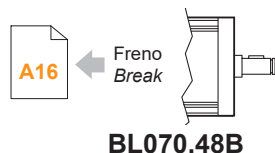
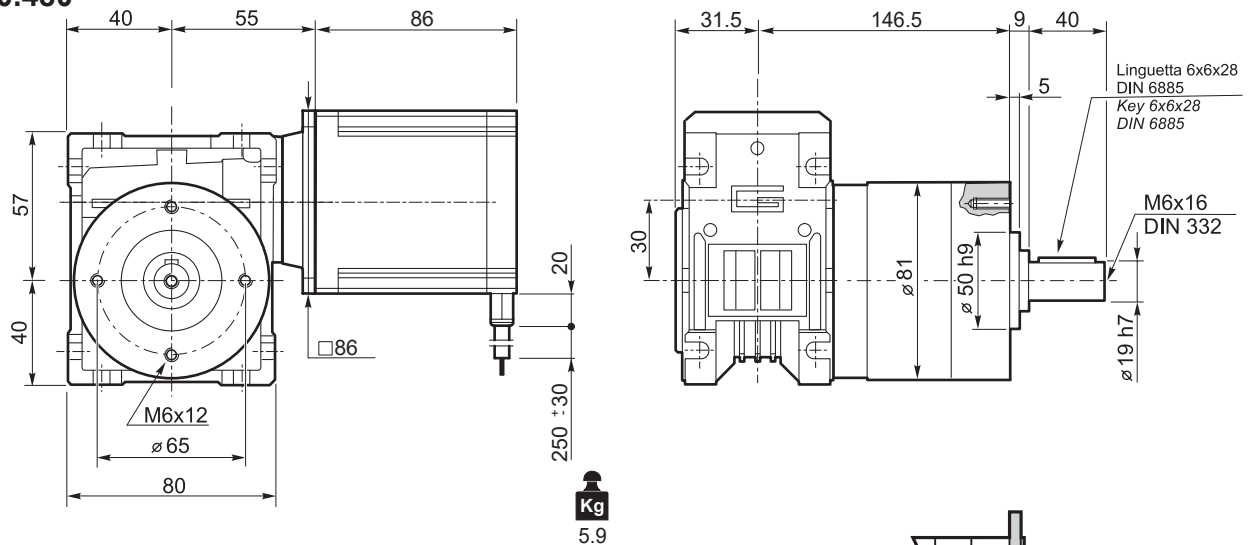
Nota: I valori * indicano il superamento della coppia massima sopportata dal riduttore per il servizio in S1.

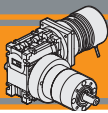
N.B.: value * indicate that maximum torque withstood by gear reducer for service in S1 is exceeded.

Tipo Type	Numero di poli Number of poles	Numero di fasi Number of phase	Tensione Rated voltage [V]	Numero di giri Rated speed [rpm]	Coppia nominale Rated torque [Nm]	Potenza nominale Rated power [W]
BL070.240	8	3	24	3000	0.7	220
BL070.480 BL070.48B	8	3	48	3000	0.7	220
Tipo Type	Coppia massima Peak torque [Nm]	Corrente nominale Rated current [A]	Resistenza Resistance [ohm]	Induttanza Inductance [mH]	Corrente massima Peak current [A]	Peso Weight [kg]
BL070.240	2.1	13	0.091	0.23	26	2.1
BL070.480 BL070.48B	1.4	6.5	0.34	1.0	13	2.1



WMP030/812..U
+
BL070.240
BL070.480



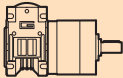


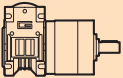
Motoriduttori brushless CC combinati

Brushless DC double reduction gearmotors

Dati tecnici

Technical data

	n_2 [min ⁻¹]	Mn_2 [Nm]	Pn_1 [kW]	i
---	-------------------------------	----------------	----------------	-----

	n_2 [min ⁻¹]	Mn_2 [Nm]	Pn_1 [kW]	i
---	-------------------------------	----------------	----------------	-----

WMP 026/521

n1 = 1400 rpm	20.7	18	57	67.5
	13.8	18	39	101.3
	10.4	18	31	135
	6.9	18	22	202.5
	5.2	18	18	270
	4.1	18	15	337.5
	3.5	18	14	405

WMP 026/521

n1 = 3000 rpm	44.4	18	57	67.5
	29.6	18	39	101.3
	22.2	18	31	135
	14.8	18	22	202.5
	11.1	18	18	270
	8.9	18	15	337.5
	7.4	18	14	405

WMP 026/522

n1 = 1400 rpm	4.8	25	20	289.3
	3.2	25	14	434
	2.4	25	11	578.6
	1.6	25	8	867.9
	1.2	25	6	1157
	1.0	25	5	1447
	0.8	25	5	1736
	0.7	25	4	2098
	0.5	25	3	2734

WMP 026/522

n1 = 3000 rpm	10.4	25	20	289.3
	6.9	25	14	434
	5.2	25	11	578.6
	3.5	25	8	867.9
	2.6	25	6	1157
	2.1	25	5	1447
	1.7	25	5	1736
	1.4	25	4	2098
	1.1	25	3	2734

WMP 026/621

n1 = 1400 rpm	20.7	35	112	67.5
	13.8	35	77	101.3
	10.4	35	59	135
	6.9	35	44	202.5
	5.2	35	35	270
	4.1	35	30	337.5
	3.5	35	26	405

WMP 026/621

n1 = 3000 rpm	44.4	35	112	67.5
	29.6	35	77	101.3
	22.2	35	59	135
	14.8	35	44	202.5
	11.1	35	35	270
	8.9	35	30	337.5
	7.4	35	26	405

WMP 026/622

n1 = 1400 rpm	4.8	50	40	289.3
	3.2	50	27	434
	2.4	50	21	578.6
	1.6	50	16	867.9
	1.2	50	12	1157
	1.0	50	11	1447
	0.8	50	9	1736
	0.7	50	8	2098
	0.5	50	6	2734

WMP 026/622

n1 = 3000 rpm	10.4	50	40	289.3
	6.9	50	27	434
	5.2	50	21	578.6
	3.5	50	16	867.9
	2.6	50	12	1157
	2.1	50	11	1447
	1.7	50	9	1736
	1.4	50	8	2098
	1.1	50	6	2734

WMP 030/811

n1 = 1400 rpm	20.7	80	256	67.5
	13.8	80	175	101.3
	10.4	80	136	135
	6.9	80	100	202.5
	5.2	80	80	270
	4.1	80	68	337.5
	3.5	80	60	405

WMP 030/811

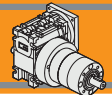
n1 = 3000 rpm	44.4	80	256	67.5
	29.6	80	175	101.3
	22.2	80	136	135
	14.8	80	100	202.5
	11.1	80	80	270
	8.9	80	68	337.5
	7.4	80	60	405

WMP 030/812

n1 = 1400 rpm	4.8	120	95	289.3
	3.2	120	65	434
	2.4	120	51	578.6
	1.6	120	38	867.9
	1.2	120	30	1157
	1.0	120	25	1447
	0.8	120	23	1736
	0.7	120	19	2098
	0.5	120	14	2734

WMP 030/812

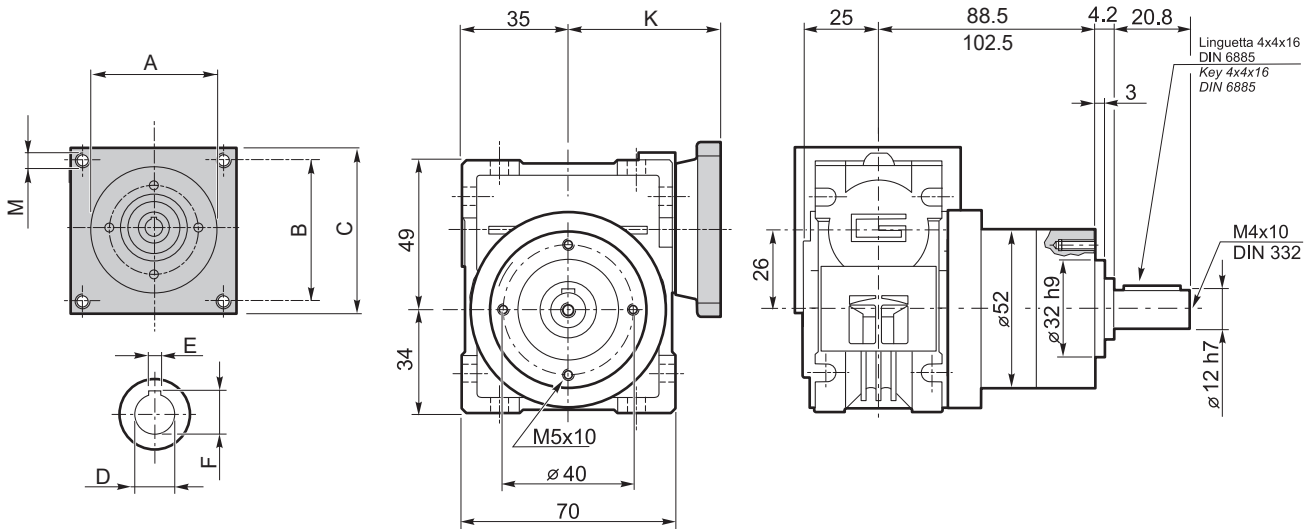
n1 = 3000 rpm	10.4	120	95	289.3
	6.9	120	65	434
	5.2	120	51	578.6
	3.5	120	38	867.9
	2.6	120	30	1157
	2.1	120	25	1447
	1.7	120	23	1736
	1.4	120	19	2098
	1.1	120	14	2734



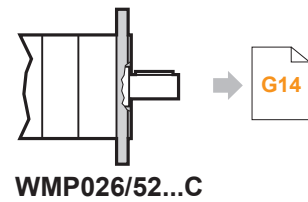
Dimensioni WMP con flange motore AS

WMP dimensions with motor flanges AS

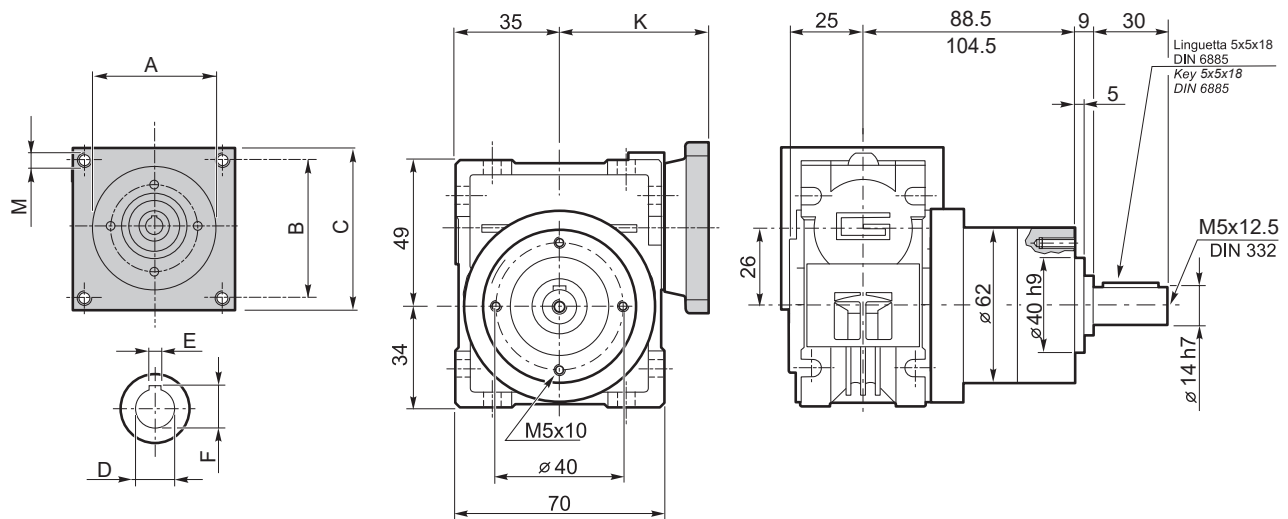
WMP 026/52...



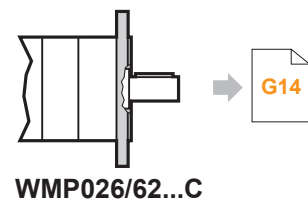
Dimensioni / Dimensions								
AS	A	B	C	M	K	Rapporti / Ratio		
						67.5...2734		
						D	E	F
AS417	38.1	47.1	56	M4	49.5	9	3	10.4
...

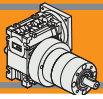


WMP 026/62...



Dimensioni / Dimensions								
AS	A	B	C	M	K	Rapporti / Ratio		
						67.5...2734		
						D	E	F
AS417	38.1	47.1	56	M4	49.5	9	3	10.4
...





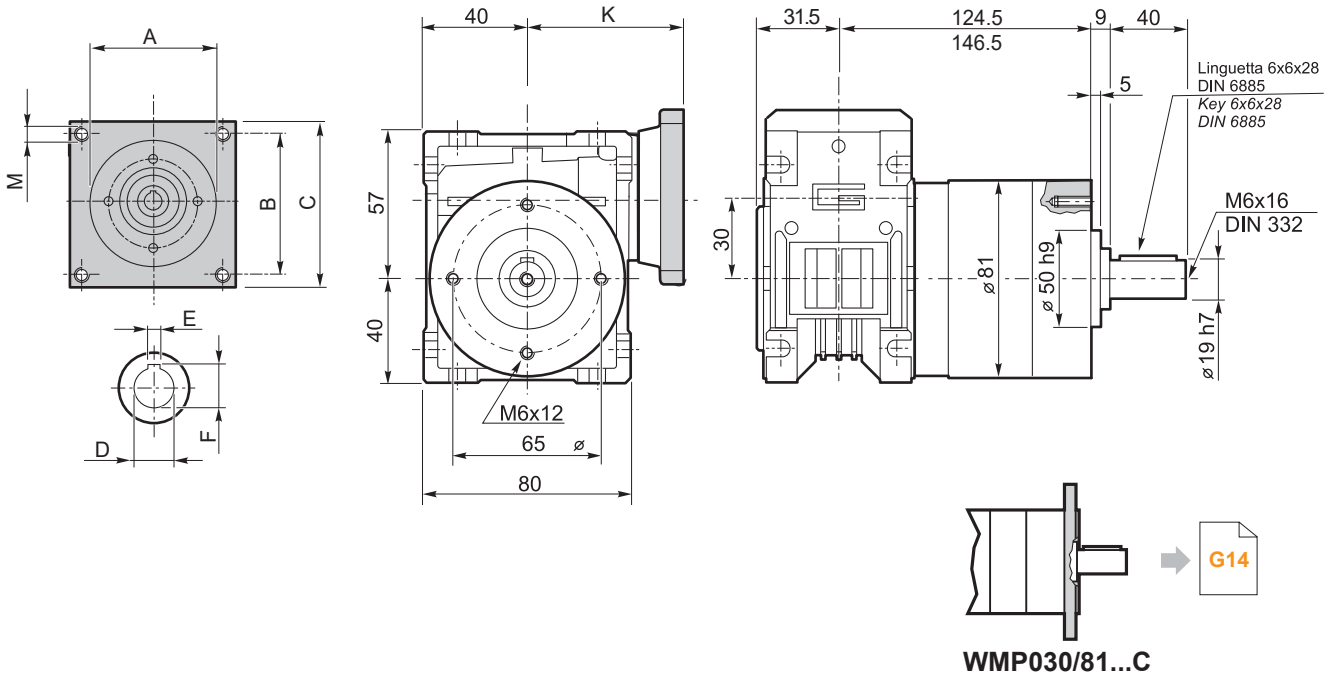
WMP

Riduttori combinati
Double reduction gearboxes

Dimensioni WMP con flange motore AS

WMP dimensions with motor flanges AS

WMP 030/81...



Dimensioni / Dimensions											
AS	A	B	C	M	K	Rapporti / Ratio					
						67.5 - 101.3 - 135 - 202.5 - 270 - 289.3 337.5 - 434 - 578.6 - 867.9 - 1157 - 1147			405 - 1736 - 2098 - 2734		
						D	E	F	D	E	F
AS393	38.1	47.1	57	M5	55	11	4	12.8	9	3	10.4
AS391	73	69.6	86	M5	55	11	4	12.8	9	3	10.4
...

WMP.../.../... C... Flange uscita / Output flanges

Dimensioni / Dimensions							
P	a2	b2	c2	e2	f2	s2	Flangia uscita Output flange
52	80	50 j7	9	65	2.5	M5	C80
	90	60 j7	9	75	2.5	5.5	C90
	105	70 j7	9	85	2.5	6.5	C105
	120	80 j7	9	100	3.0	6.5	C120
62	80	50 j7	9	65	2.5	M5	C80
	90	60 j7	9	75	2.5	5.5	C90
	105	70 j7	9	85	2.5	6.5	C105
81	80	50 j7	9	65	2.5	M5	C80
	90	60 j7	9	75	2.5	M6	C90
	105	70 j7	9	85	2.5	6.5	C105
	120	80 j7	9	100	3.0	6.5	C120