

Motoriduttori brushless CC ad ingranaggi cilindrici

Brushless DC helical in-line gearmotors

CMG002 con motore brushless CC

CMG002 with brushless DC motor

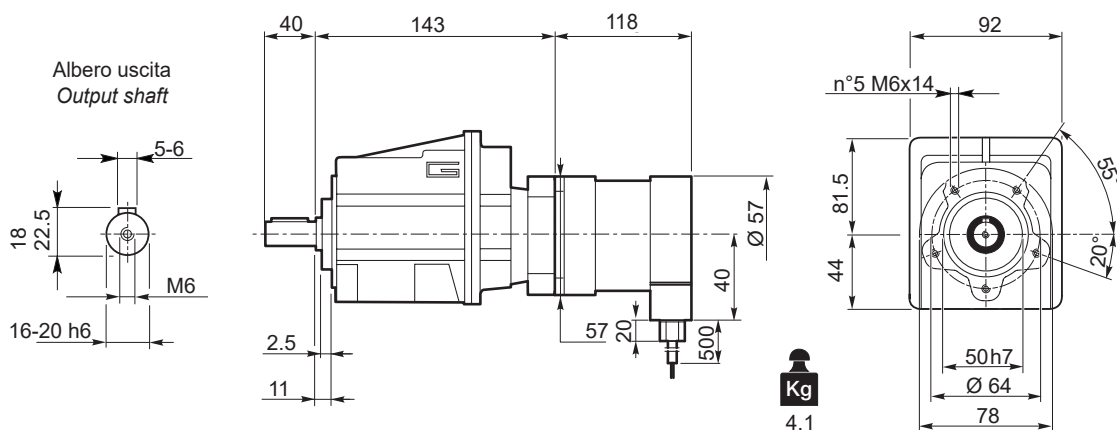
CMG 002	BLS043.240													
	24V						36V							
	n _{2MIN} [rpm]			n _{2MAX} [rpm]			n _{1MAX} [rpm]	n _{2MIN} [rpm]			n _{2MAX} [rpm]		n _{1MAX} [rpm]	
M ₂ [Nm]	sf		M ₂ [Nm]	sf		M ₂ [Nm]		sf		M ₂ [Nm]	sf			
5.0	60	2.1	22.2	596	2.1	15.0	3000	80	2.1	22.2	795	2.1	13.3	4000
6.1	49	2.5	18.3	492	2.5	12.4		66	2.5	18.3	656	2.5	11.0	
7.5	40	3.1	14.9	401	3.1	10.1		53	3.1	14.9	534	3.1	8.9	
9.0	33	3.7	15.5	334	3.7	10.5		44	3.7	15.5	445	3.7	9.3	
10.2	30	4.2	13.7	295	4.2	9.3		39	4.2	13.7	394	4.2	8.2	
12.1	25	5.0	11.5	249	5.0	7.8		33	5.0	11.5	331	5.0	6.9	
13.4	22	5.5	14.6	224	5.5	9.9		30	5.5	14.6	299	5.5	8.7	
15.1	20	6.2	12.9	198	6.2	8.7		26	6.2	12.9	264	6.2	7.7	
18.2	17	7.5	10.7	165	7.5	7.3		22	7.5	10.7	220	7.5	6.4	
21.6	14	8.9	9.0	139	8.9	6.1		19	8.9	9.0	185	8.9	5.4	
23.5	13	9.7	8.3	128	10	5.6		17	9.7	8.3	170	9.7	5.0	
25.1	12	10	7.8	120	10	5.3		16	10	7.8	159	10	4.7	
27.1	11	11	7.2	111	11	4.9		15	11	7.2	148	11	4.3	
32.5	9.2	13	6.0	92	13	4.1		12	13	6.0	123	13	3.6	
42.0	7.1	17	4.6	71	17	3.1		9.5	17	4.6	95	17	2.8	
44.9	6.7	19	4.3	67	19	2.9		8.9	19	4.3	89	19	2.6	
48.9	6.1	20	4.0	61	20	2.7		8.2	20	4.0	82	20	2.4	
55.1	5.4	23	3.5	54	23	2.4		7.3	23	3.5	73	23	2.1	

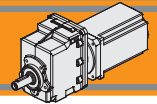
Tipo Type	Numero di poli Number of poles	Numero di fasi Number of phase	Tensione Rated voltage [V]	Numero di giri Rated speed [rpm]	Coppia nominale Rated torque [Nm]	Potenza nominale Rated power [W]
BLS043.240	4	3	36	4000	0.43	180
			24	3000		130
Tipo Type	Coppia massima Peak torque [Nm]	Corrente nominale Rated current [A]	Resistenza Resistance [ohm]	Induttanza Inductance [mH]	Corrente massima Peak current [A]	Peso Weight [kg]
BLS043.240	0.86	6	0.35	1	12.0	1.25

Azionamenti
Drives



CMG002U..
+
BLS043.240





CMG002 con motore brushless CC

CMG002 with brushless DC motor

CMG 002	BL070.240 BL070.480 / BL070.48B							BL140.480						BL210.480 / BL210.48E					
	24V / 48V							48V						48V					
	ir	n ₂ MIN [rpm]		n ₂ MAX [rpm]		n ₁ MAX [rpm]	M ₂ [Nm]	sf	n ₂ MIN [rpm]		n ₂ MAX [rpm]		n ₁ MAX [rpm]	n ₂ MIN [rpm]		n ₂ MAX [rpm]		n ₁ MAX [rpm]	
5.0		60	3.4	13.6	596				3.4	9.2	60	6.8		6.8	596	6.8	4.6		60
6.1	49	4.1	11.2	492	4.1	7.6	49	8.2	5.6	492	8.2	3.8	49	12	3.7	492	12	2.5	
7.5	40	5.0	9.1	401	5.0	6.2	40	10	4.6	401	10	3.1	40	15	3.0	401	15	2.1	
9.0	33	6.0	9.5	334	6.0	6.5	33	12	4.8	334	12	3.2	33	18	3.2	334	18	2.2	
10.2	30	6.8	8.4	295	6.8	5.7	30	14	4.2	295	14	2.9	30	20	2.8	295	20	1.9	
12.1	25	8.1	7.1	249	8.1	4.8	25	16	3.5	249	16	2.4	25	24	2.4	249	24	1.6	
13.4	22	9.0	8.9	224	9.0	6.1	22	18	4.5	224	18	3.0	22	27	3.0	224	27	2.0	
15.1	20	10	7.9	198	10	5.4	20	20	4.0	198	20	2.7	20	30	2.6	198	30	1.8	
18.2	17	12	6.6	165	12	4.5	17	24	3.3	165	24	2.2	17	36	2.2	165	36	1.5	
21.6	14	15	5.6	139	15	3.8	14	29	2.8	139	29	1.9	14	43	1.9	139	43	1.3	
23.5	13	16	5.1	128	16	3.5	13	32	2.5	128	32	1.7	13	47	1.7	128	47	1.2	
25.1	12	17	4.8	120	17	3.2	12	34	2.4	120	34	1.6	12	51	1.6	120	51	1.1	
27.1	11	18	4.4	111	18	3.0	11	36	2.2	111	36	1.5	11	55	1.5	111	55	1.0	
32.5	9.2	22	3.7	92	22	2.5	9.2	44	1.8	92	44	1.3	9.2	65	1.2	92	65	0.8	
42.0	7.1	28	2.8	71	28	1.9	7.1	57	1.4	71	57	1.0	7.1	85	0.9	71	78	0.7	
44.9	6.7	30	2.7	67	30	1.8	6.7	60	1.3	67	60	0.9	6.7	90	0.9	67	78	0.7	
48.9	6.1	33	2.5	61	33	1.7	6.1	66	1.2	61	66	0.8	6.1	99	0.8	61	78	0.7	
55.1	5.4	37	2.2	54	37	1.5	5.4	74	1.1	54	74	0.7	5.4	110	0.7	54	78	0.7	

Attenzione: superamento della coppia nominale supportata dal riduttore per servizio S1.

Contattare il ns. servizio tecnico

Attention: rated torque withstood by gear reducer for service in S1 is exceeded.

Please. contact our technical office.

Tipo Type	Numero di poli Number of poles	Numero di fasi Number of phase	Tensione Rated voltage [V]	Numero di giri Rated speed [rpm]	Coppia nominale Rated torque [Nm]	Potenza nominale Rated power [W]
BL070.240	8	3	24	3000	0.7	220
BL070.480 BL070.48B	8	3	48	3000	0.7	220
BL140.480	8	3	48	3000	1.4	440
BL210.480 BL210.48E	8	3	48	3000	2.1	660
Tipo Type	Coppia massima Peak torque [Nm]	Corrente nominale Rated current [A]	Resistenza Resistance [ohm]	Induttanza Inductance [mH]	Corrente massima Peak current [A]	Peso Weight [kg]
BL070.240	2.1	13	0.091	0.23	26	2.1
BL070.480 BL070.48B	1.4	6.5	0.34	1.0	13	2.1
BL140.480	2.8	13	0.16	0.5	26	3.15
BL210.480 BL210.48E	4.2	18.7	0.115	0.31	37	4.2

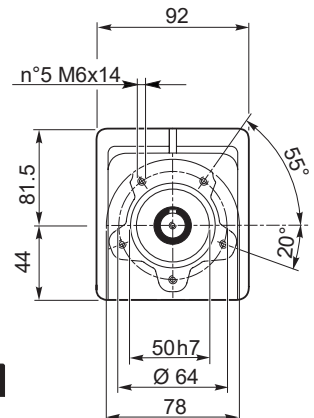
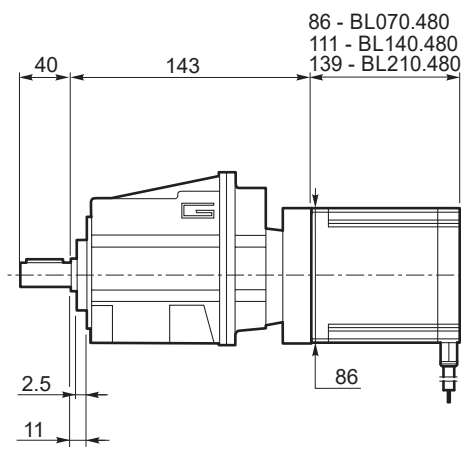
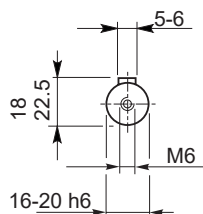
Azionamenti
Drives



Albero uscita
Output shaft

CMG002U..

+
BL070.240
BL070.480
BL140.480
BL210.480



Freno
Break

BL070.48B
BL210.480E